

TRU-BOLT.
Pegasus

Biometric Enabled Interior Lever

ENGLISH

Important
Use the QR code below for the most up to date instructions:



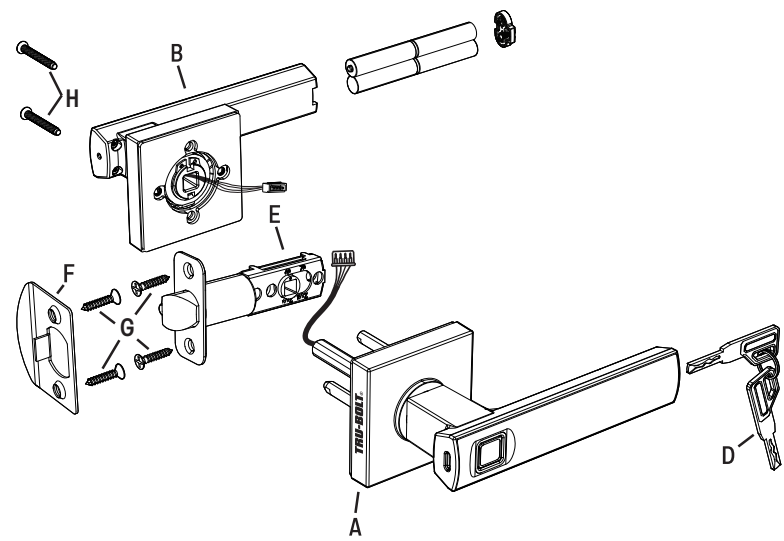
Tools Needed for Lock Installation:

- Phillips Screwdriver



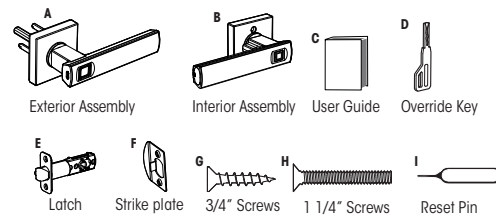
Read this manual carefully before installing and operating!

1 Installation Overview



Package Includes:

- 1 - Exterior Assembly
- 1 - Interior Assembly
- 1 - User Guide
- 2 - Keys
- 1 - Strike Plate
- 2 - 1 1/4" Screws
- 1 - Latch
- 4 - 3/4" Screws



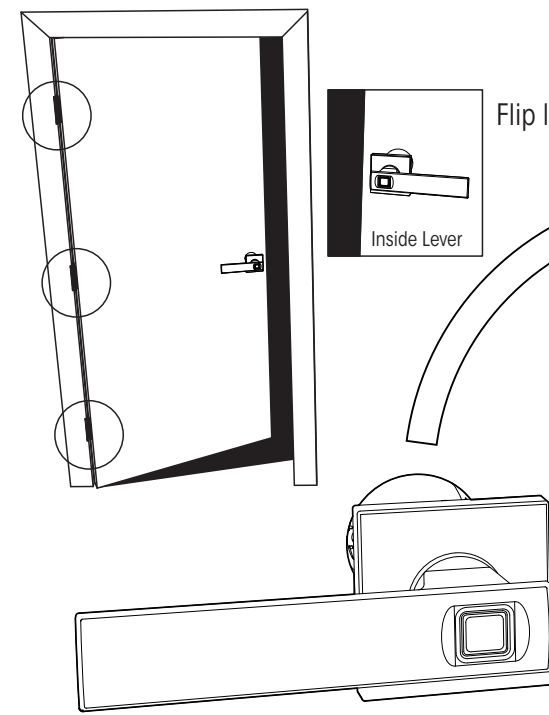
Please carefully check the above list to confirm all items have been received. If any items are missing, please contact Consumer Assistance. (See page for contact information)

Read this manual carefully before installing and operating!

2 Install Exterior Assembly
Determine Door "Handing"

View from outside of door

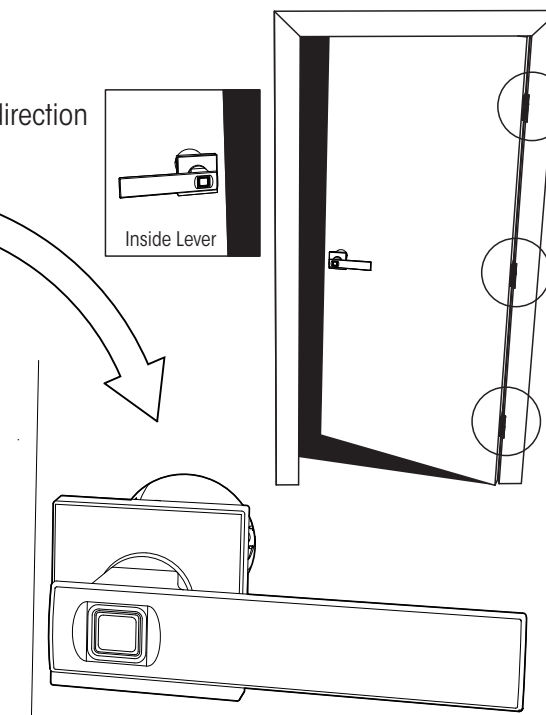
Left Handed Door



Door hinges will be located on the left when standing outside the door.

Inside lever should point to the right of the hinges.

Right Handed Door

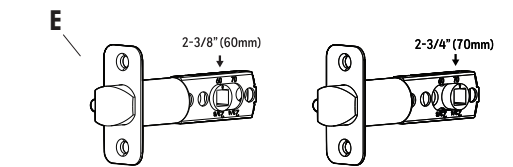


Door hinges will be located on the right when standing outside the door.

Inside lever should point to the left of the hinges.

3 Install Enclosed Latch and Strike Plate
Do not over-tighten latch screws.

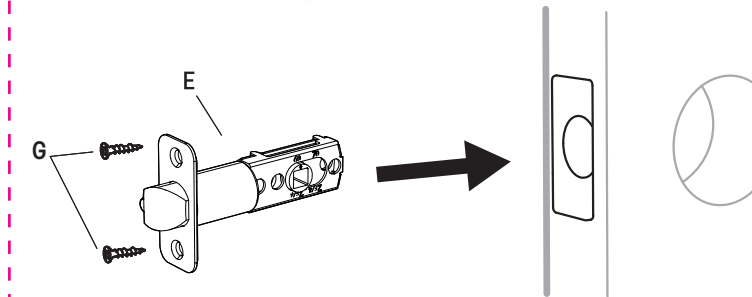
NOTE: Do not extend Cylindrical Cover past 2-3/4" (70mm)



TO CONVERT FROM 2-3/8" (60mm) BACKSET TO 2-3/4" (70mm) BACKSET

1. Hold latch with numbers facing forward and thumb pressing on the latch.
2. Pull or Push the extension plate to the required size.

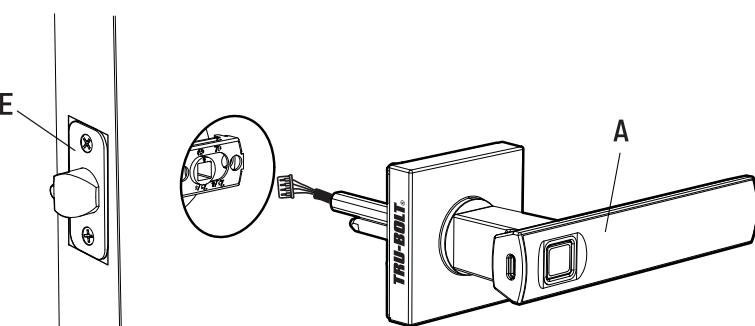
The latch plate on the door needs to be straight and not protruding from door. Make adjustment before installing or this will cause problems with bolt fitting into latch hole.



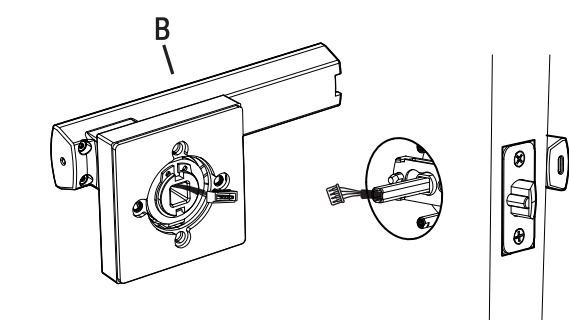
IMPORTANT:
Latch Plunger always faces the inside of the room.

4 Install Interior Assembly

Work with the door open



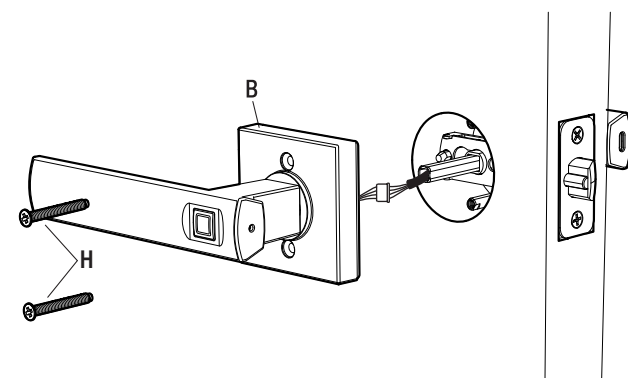
Insert the (A) Exterior Assembly onto the door with control wire going through the (E) latch.



Connect the control wire to the wire connector.

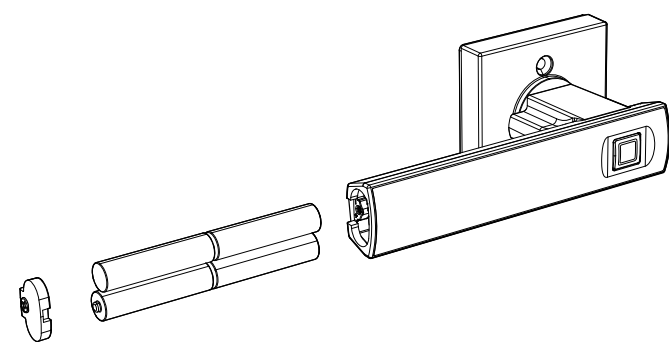
IMPORTANT:
Make sure the black lines on the connector heads line up.

5 Install Interior Assembly



Push excess wire into the (B) interior assembly and insert (H) screws to attach the interior lever.

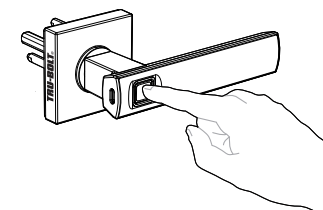
6 Install Batteries and Cover



This Electronic lock requires (4) High Quality AAA Alkaline batteries. Tighten battery cover screw. When all 4 batteries are installed in the correct position, you should hear 2 beeps and the thumbprint will illuminate green.

7 Testing Operation

Test the lock with door open

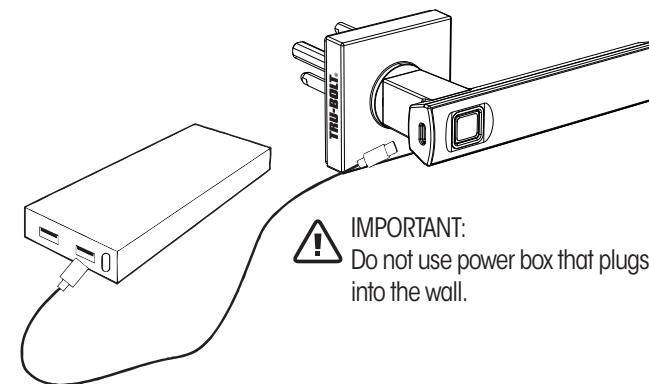


8 Low Voltage Alarm

Low voltage alarm is indicated by 7 red flashes when using the fingerprint reader. Change batteries at this time.

9 Emergency Power Usage

Plug the lock into a power bank for an emergency power source (power bank/portable battery charger and cable - not Included).



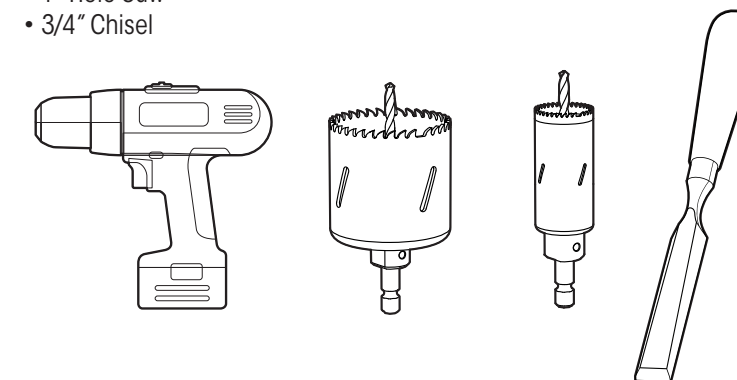
IMPORTANT:
Do not use power box that plugs into the wall.

Preparing Door

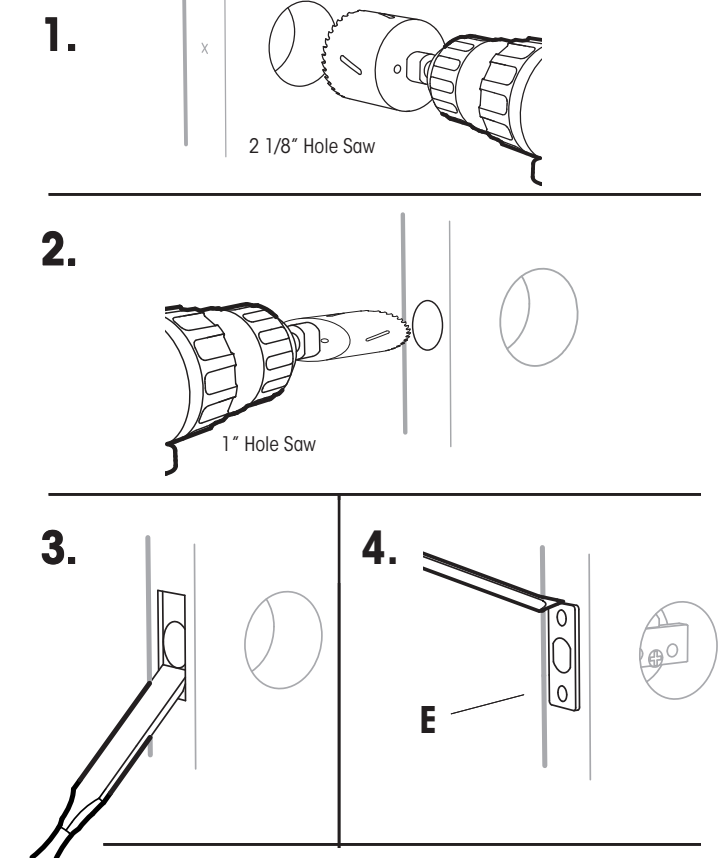
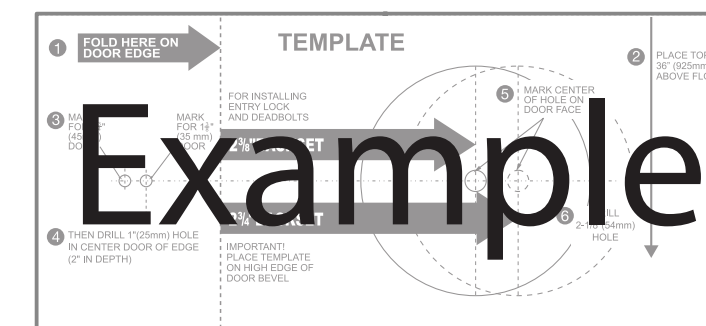
Tools Needed for Door Preparation (if there is no knob hole):

NOTE: Skip this step if your door comes with pre-drilled holes.

- Drill
- 2 1/8" Hole Saw
- 1" Hole Saw
- 3/4" Chisel



Refer to Template included for Door Prep Instructions



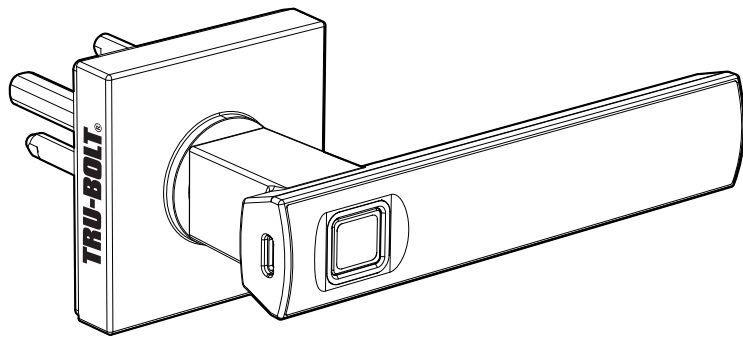
Strike Plate Installation

NOTE: The strike plate on the door frame needs to be straight and not protruding from door frame. Make adjustment before installing or this will cause problems with bolt fitting into latch hole.

TRU-BOLT®
Pegasus

Biometric Enabled Interior Lever

Programming Instructions

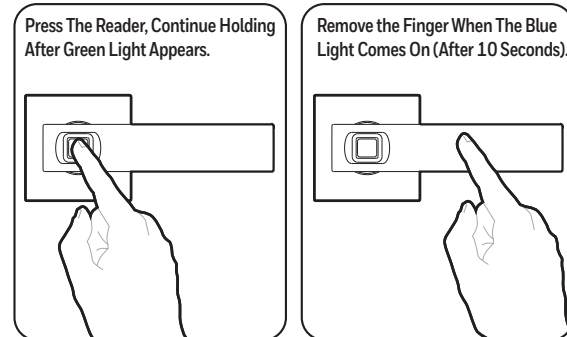


IMPORTANT:

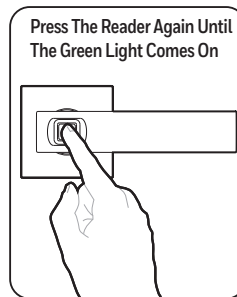
You Must Set 2 Admin Fingerprints Using 2 Different Fingers Before Adding a New User Fingerprint.

1 Create A New Administrator Fingerprint
You Must Set 2 Admin Fingerprints Using 2 Different Fingers.

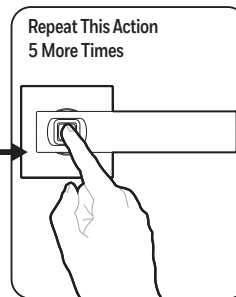
Step 1



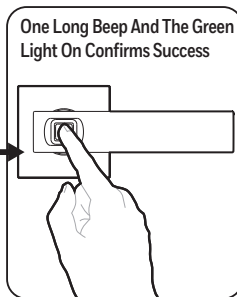
Step 2



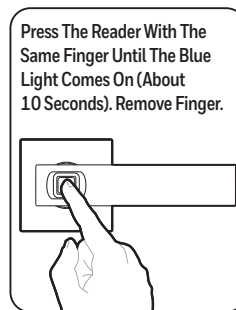
Step 3



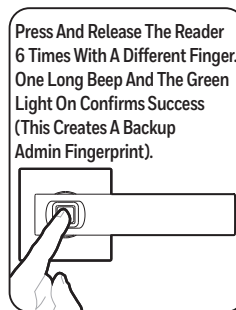
Step 4



Step 5

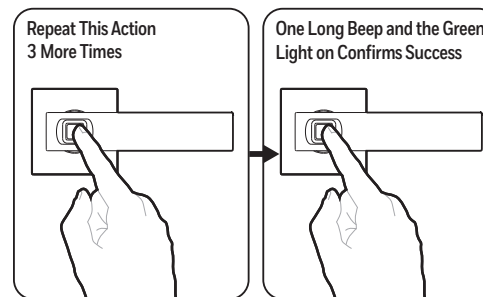
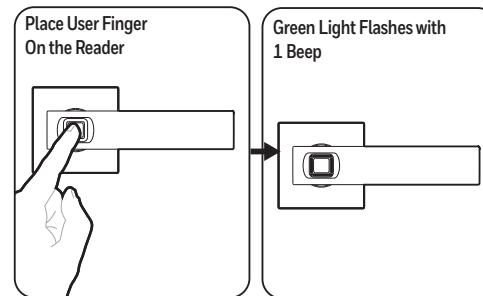
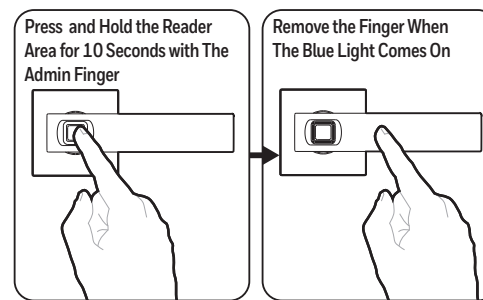


Step 6



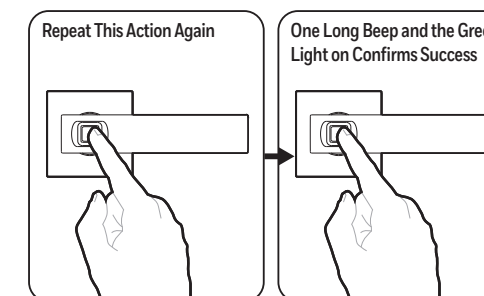
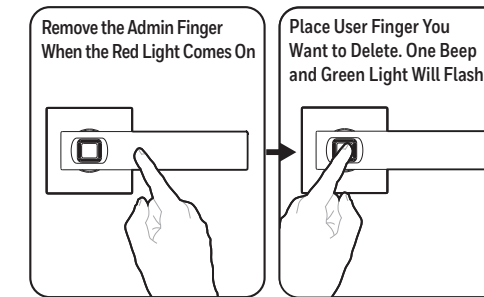
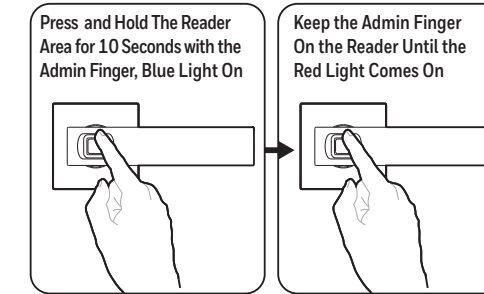
2 Adding a User Fingerprint
The 3rd Fingerprint Used Is The 1st User Fingerprint.

NOTE: During setting stage if no operation after 10 seconds, the system will go to sleep mode.



NOTE: After completion, test new user fingerprint.

3 Delete User Fingerprint
User Must Be Present to Remove Fingerprint. If user is not present, factory reset is required.



NOTE: Confirm by placing removed user finger on reader. 2 red flashes will illuminate.

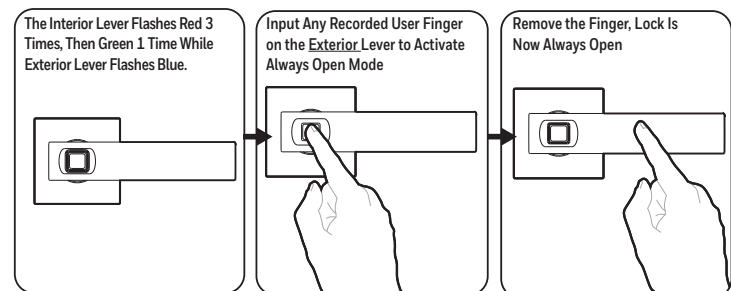
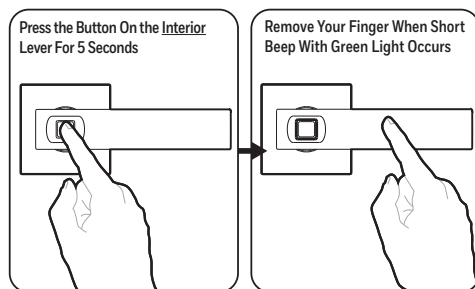
User Passcode Record

ID Number 01 Should be Reserved for the Admin

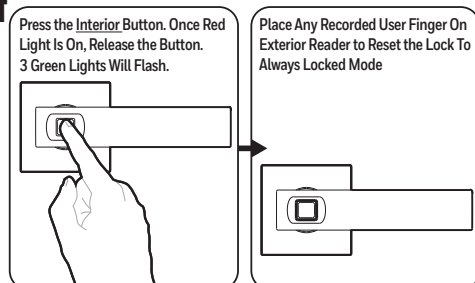
User Name	Finger	Finger Print	ID
_____	_____	_____	01
_____	_____	_____	02
_____	_____	_____	03
_____	_____	_____	04
_____	_____	_____	05
_____	_____	_____	06
_____	_____	_____	07
_____	_____	_____	08
_____	_____	_____	09
_____	_____	_____	10
_____	_____	_____	11
_____	_____	_____	12
_____	_____	_____	13
_____	_____	_____	14
_____	_____	_____	15
_____	_____	_____	16
_____	_____	_____	17
_____	_____	_____	18
_____	_____	_____	19
_____	_____	_____	20
_____	_____	_____	21
_____	_____	_____	22
_____	_____	_____	23
_____	_____	_____	24
_____	_____	_____	25

NOTE: Each Passcode and Fingerprint takes the space of one of the available 50 ID Numbers.

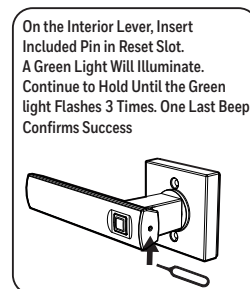
4 Always Open Mode On



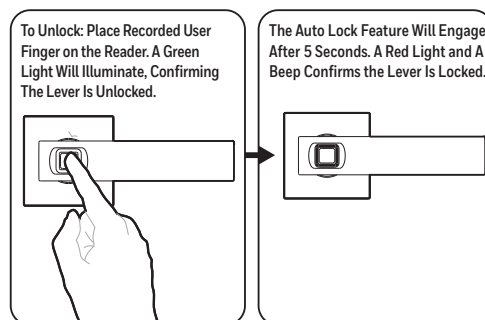
Off



5 Restore To Factory Setting



6 Unlock and Lock



7 Sound And Light

Low-Voltage Alarm: Place any finger on the biometric reader, there will be 7 short beeps with 7 red light flashes, followed by a green light, and one additional red flash.

During setting mode: Blue light on exterior lever

Correct setting and correct finger recognition: Long beep with green light on

Setting confirmation: Short beep with green light on

Incorrect setting and incorrect finger recognition: 2 short beeps with 2 red light flashes

4 incorrect fingerprint attempts: System is locked for 60 seconds.

Contact Us First! Do Not Return to Store

EMAIL: locks@lewishymaninc.com
WEBSITE: www.trubollocks.info
ADDRESS: Consumer Assistance Dept.
Lewis Hyman, Inc.
860 East Sandhill Avenue
Carson, CA 90746 USA
TELEPHONE: US/Canada 800-860-1677 Ext. 1801 (Toll Free)

Limited 1-Year Electronic Warranty
Limited Lifetime Mechanical and Finish Warranty
This Tru-Bolt® product comes with a 1-Year Limited Warranty on Electronic Parts and a Limited Lifetime Mechanical and Finish Warranty against defects in materials and workmanship under normal use to the original residential user. Proof of purchase and ownership is required for the warranty to be in effect. This warranty is non transferable and applies to the original purchaser only, as long as the original purchaser occupies the residential premises upon which the product(s) was originally installed. This warranty DOES NOT COVER removal and reinstallation of product(s), scratches, abrasions, deterioration due to the use of paints, solvents or other chemicals, abuse, misuse, or product(s) used in commercial applications, does not cover any losses, injuries to persons/property or costs, and shipping and freight expenses required to return product(s). In no event shall Tru-Bolt® be liable for any special, incidental or consequential damages. If this product(s) is considered a consumer product, please be advised that some local and state laws do not allow limitations on incidental or consequential damages or how long an implied warranty lasts, so that the above limitations may not fully apply. Refer to your local laws for your specific rights under this warranty. If there are any problems please call our customer service with any questions or concerns.

Don't forget to register your lock at: Trubollocks.info for updates.