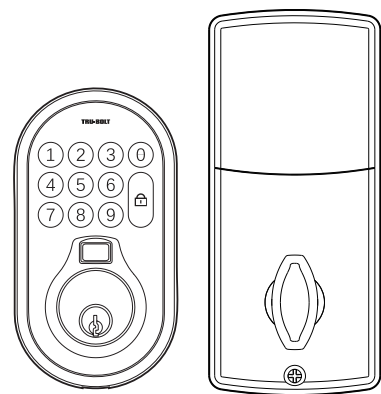


TRU-BOLT®

ENGLISH

Polaris

Biometric Enabled Deadbolt with Keypad



Important
Use the QR code below for the most up to date instructions:



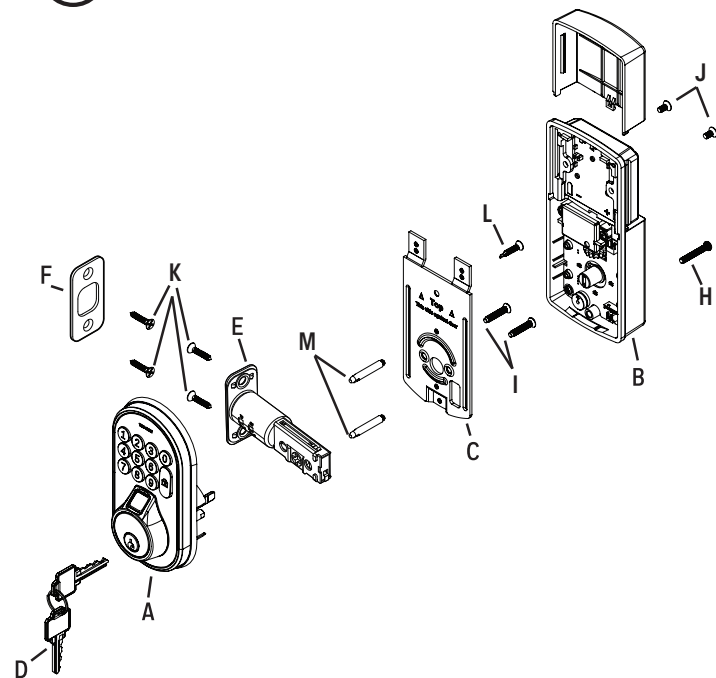
Tools Needed for Lock Installation:

- Phillips Screwdriver



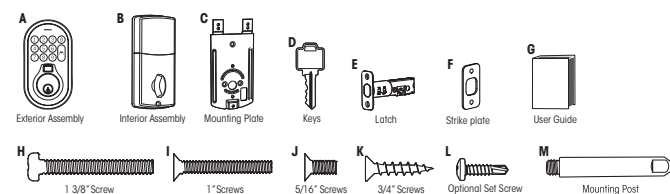
Read this manual carefully before installing and operating!

1 Installation Overview



Package Includes:

- | | | |
|-----------------------|--------------------|------------------------|
| 1 - Exterior Assembly | 1 - Strike Plate | 2 - 5/16" Screws |
| 1 - Interior Assembly | 1 - Mounting Plate | 2 - 1" Screws |
| 1 - User Guide | 1 - Latch | 4 - 3/4" Screws |
| 2 - Keys | 1 - 3/8" Screw | 2 - Mounting Posts |
| | | 1 - Optional Set Screw |

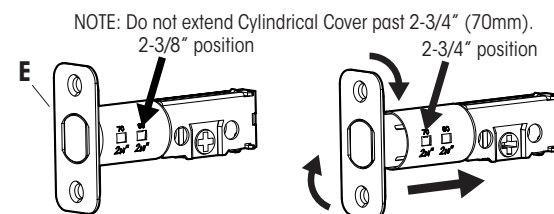


Please carefully check the above list to confirm all items have been received. If any items are missing, please contact Consumer Assistance. (See back for contact information)

Read this manual carefully before installing and operating!

2 Install Enclosed Latch and Strike Plate

Do not over-tighten latch screws.



- TO CONVERT FROM 2-3/8" (60mm) BACKSET TO 2-3/4" (70mm) BACKSET:
1. Hold latch with numbers facing forward and thumb pressing on the bolt.
 2. Rotate the cylinder cover clockwise.
 3. Pull and twist the extension plate all the way out.
 4. Rotate the cylinder counter clockwise so that the marking aligns with the 2-3/4" position indicator.

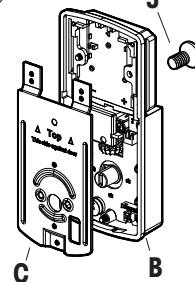
The latch plate on the door needs to be straight and not protruding from door. Make adjustment before installing or this will cause problems with bolt fitting into latch hole.



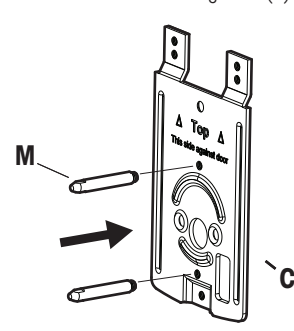
Deadbolt Latch Must Be Retracted During Installation.

Preparation for Interior Assembly

Remove (J) Screw from inside the battery compartment within the (B) Housing to release the Mounting Plate (C).



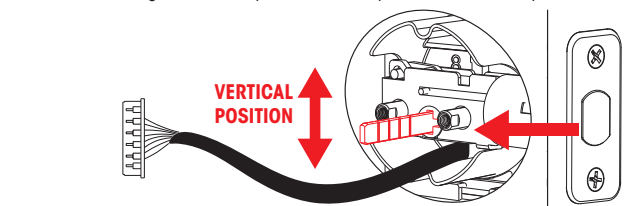
Screw Mounting Post (M) into holes on Mounting Plate (C).



3 Install Exterior Assembly

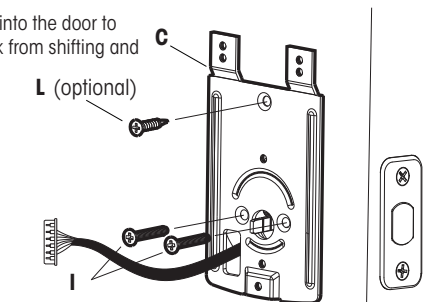
Check that the Rubber Gasket is secured on the Exterior Assembly (A). Insert the Exterior Assembly onto the door with the tailpiece going through the Deadbolt Latch in the VERTICAL POSITION.

Route the Control Wire through the door UNDER the Deadbolt Latch. **Make sure the door is shut, lock and unlock using the key, ensure that the latch is operating smoothly and is aligned properly without scraping the strike plate.** If not, go back to step 2 and ensure you followed the steps.



Work with the door open

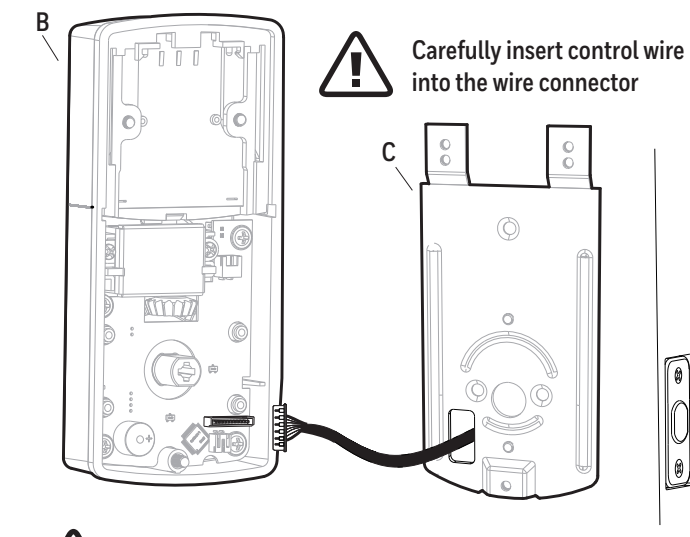
(L) screw goes into the door to prevent the lock from shifting and is optional.



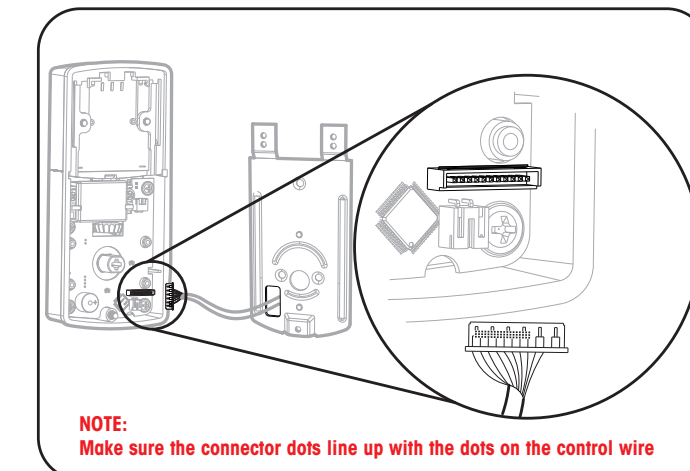
Secure mounting plate to door

4 Install Interior Assembly

Carefully insert control wire into the wire connector

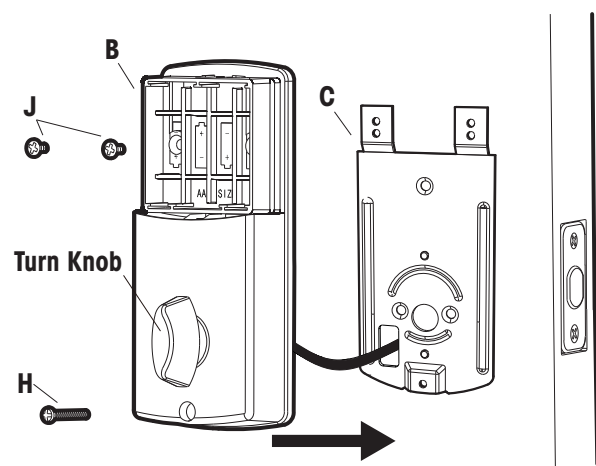


Work with the door open

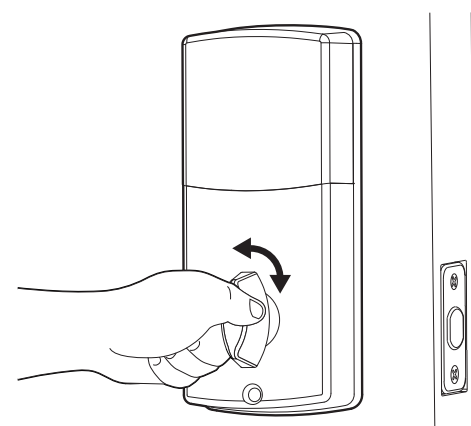


5 Install Interior Assembly

NOTE: Make sure the Turn Knob is in the vertical position. Be careful not to pinch the control wire when assembling.

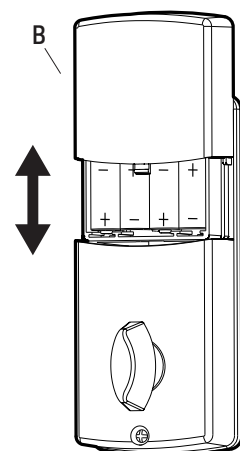


Test the lock



Lock and unlock using the turn knob, make sure the latch is opening and closing easily. If not, go back to step 2 and ensure you followed the steps

6 Install Batteries and Cover



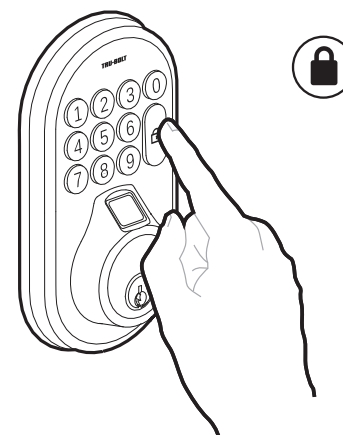
This Electronic lock requires (4) High Quality AA Alkaline batteries. When all 4 batteries are installed in the correct position, you should hear 2 beeps and the keypad will illuminate.

The Lock motor will engage and do a series of locking and unlocking motions in order to automatically determine your door "Handing" (left or right handed door). When completed the lock will beep and the keypad will flash.

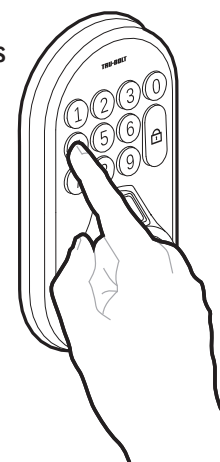
NOTE: Do not touch the Keypad until the light turns off. Do not use rechargeable batteries or non-alkaline batteries.

7 Testing Operation

Test the lock button with door open



Test unlocking
Press 1-2-3-4
and wait 5 seconds
for lock to unlock

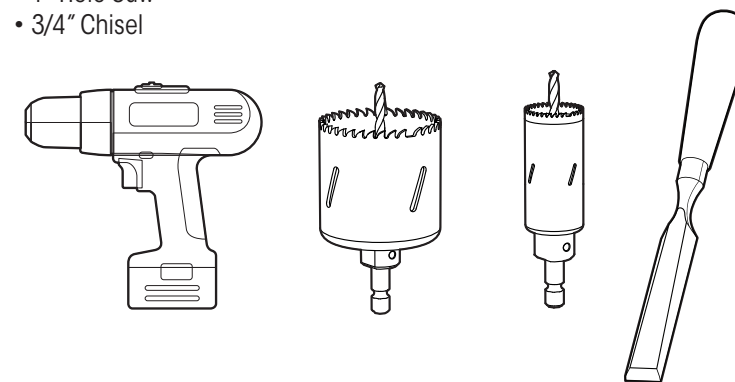


Preparing Door

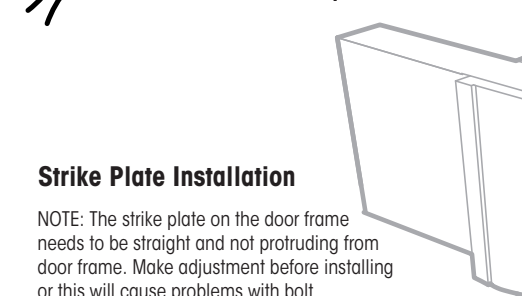
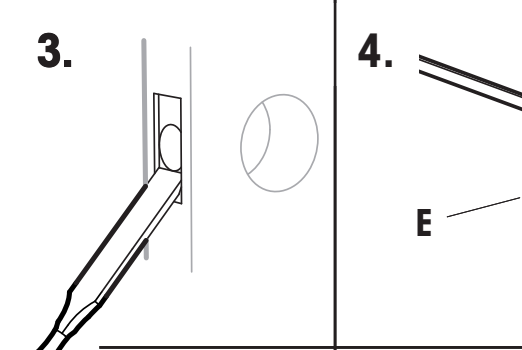
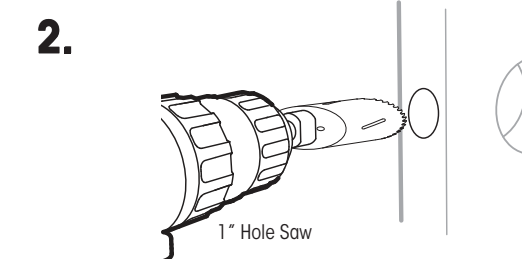
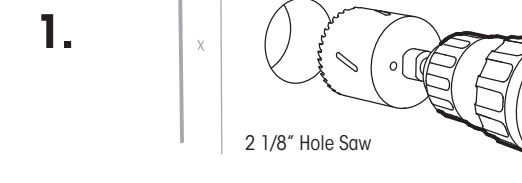
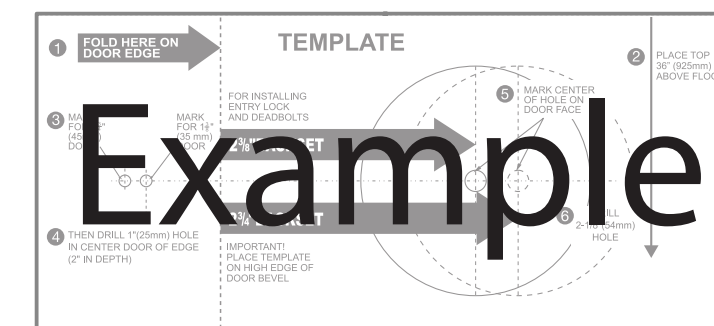
Tools Needed for Door Preparation (if there is no knob hole):

NOTE: Skip this step if your door comes with pre-drilled holes.

- Drill
- 2 1/8" Hole Saw
- 1" Hole Saw
- 3/4" Chisel



Refer to Template included for Door Prep Instructions



Strike Plate Installation

NOTE: The strike plate on the door frame needs to be straight and not protruding from door frame. Make adjustment before installing or this will cause problems with bolt fitting into latch hole.

In order to program the lock, select a 6 digit Administrator Code

It is best to write down your Administrator Code prior to step 2. Code cannot be less than 6 digits:

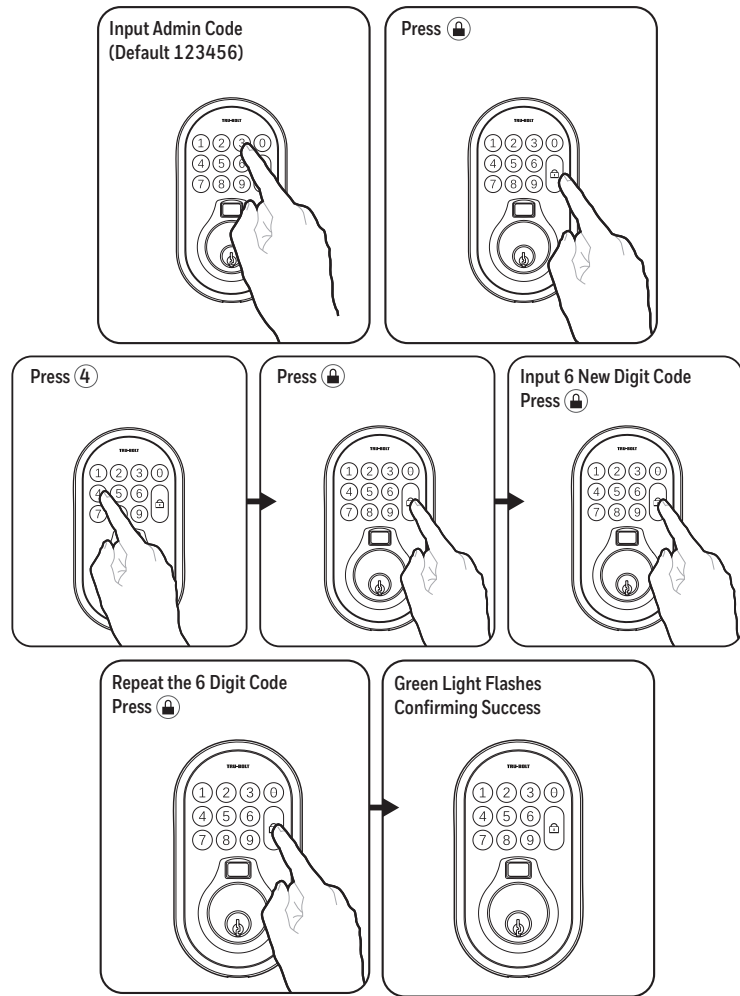
--	--	--	--	--	--



NOTE: Lock must be in the unlock position while programming.
NOTE: Steps 1, and 2 MUST be Completed BEFORE Setting up a Fingerprint. At least 1 fingerprint required.

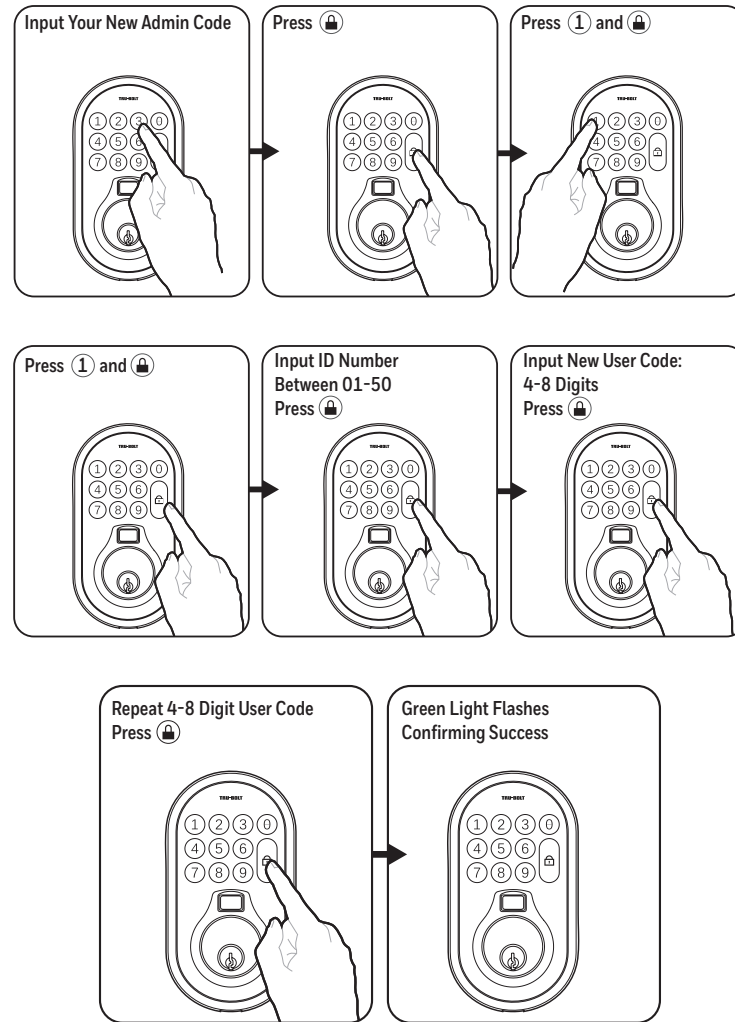
1 Create A New Administrator Code

Change Admin code and User codes from Factory settings to codes of your choice.



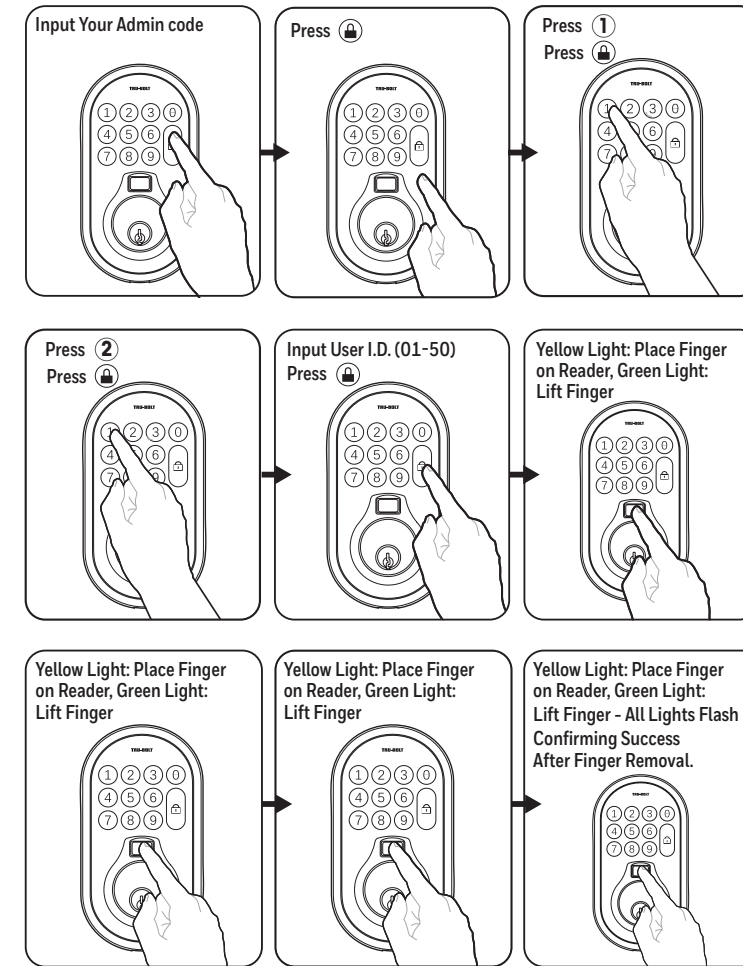
2 Adding a User Code

Set up first User as Administrator.



3 Set Up User Fingerprint

Set up first Fingerprint as Administrator.



User Passcode Record

User Passcodes Must be 4-6 Digits Long
 ID Number 01 Should be Reserved for the Administrator

User Name	User Passcode	Finger Print	ID
			01
			02
			03
			04
			05
			06
			07
			08
			09
			10
			11
			12
			13
			14
			15
			16
			17
			18
			19
			20
			21
			22
			23
			24
			25

NOTE: Each Passcode and Fingerprint takes the space of one of the available 50 ID Numbers

4 How to Operate Your New Lock

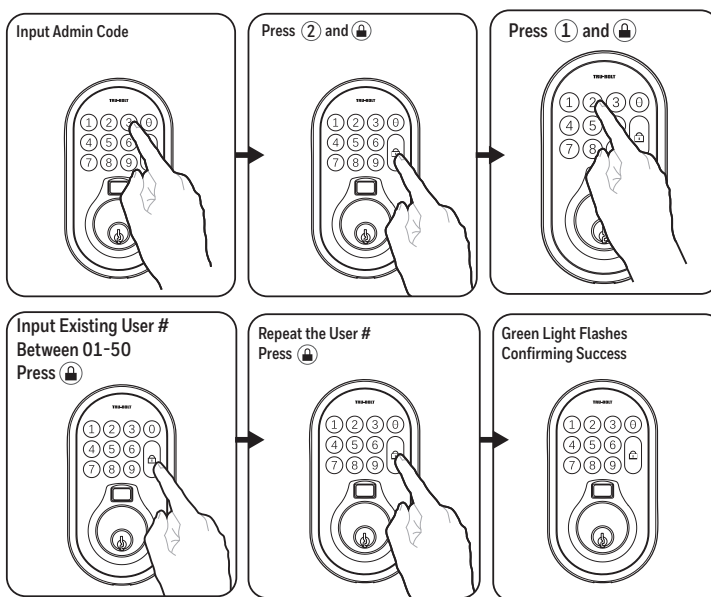
To Lock your lock - press the lock button.

To Unlock your lock - enter your User Code (not the Admin code) and wait 5 seconds for lock to Unlock.

OR

Place your finger on the fingerprint reader.

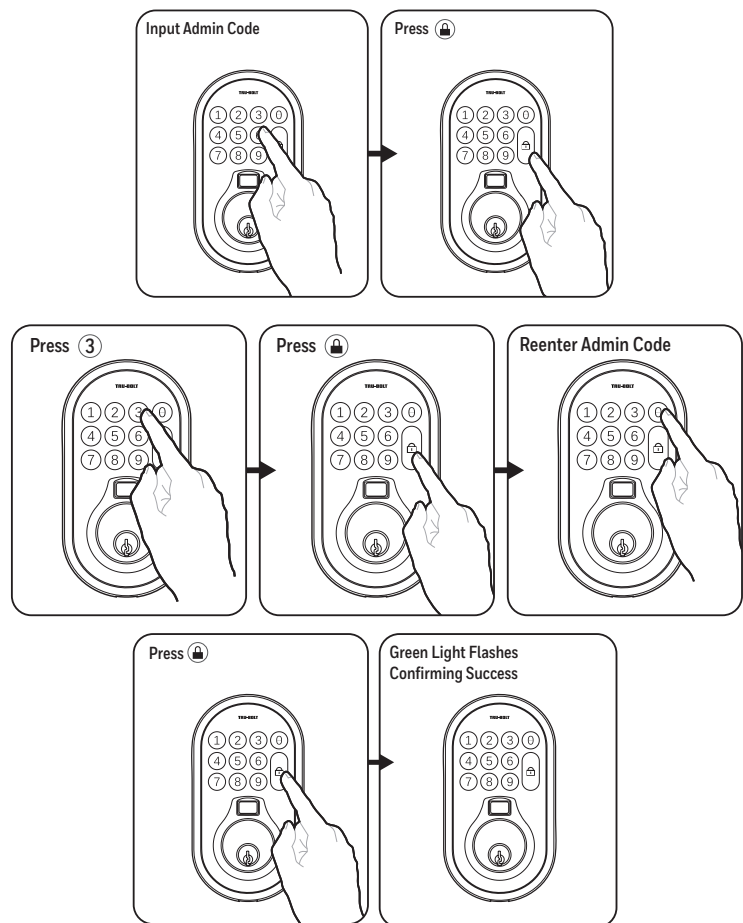
5 Deleting a User Code



6 Delete User Fingerprint

- 1) Input Administrator Code, Then Press
- 2) Press 2, Then Press
- 3) Press 2, Then Press
- 4) Input the ID (02-50) that will be deleted, Then Press
- 5) Repeat step 4

7 Deleting All User Codes and Fingerprints



8 Additional Programming Functions

Programming Symbols

- Lock / Clear / Programming
- Administrator Code

Automatic Lock Function

SET OR CANCEL AUTO LOCK
 You can set the lock to automatically close after each time the lock is opened. Time value range = 20 - 900 seconds, enter the following:

Set Auto Lock: → → 5 → → Time Value →

Hear 1 beep and Light Indicator illuminates green.

To cancel Auto Lock set the time to 00, enter the following:

Cancel Time Value Auto Lock: → → 5 → → 00 →

Hear 1 beep and Light Indicator illuminates green.

TEMPORARILY DISABLE:

While in Auto-Lock mode, unlock door using . Within 10 seconds you must turn the locking knob by hand to the locked position, wait more than 2 seconds then turn the locking knob back to the unlock position. The Auto-Lock mode is now disabled.

RESTORE:

To restore the Auto-Lock function, turn the locking knob by hand to the locked position, wait more than 2 seconds or press the Lock button on the keypad.

Vacation Mode

With Vacation Mode enabled, the system enters into low-power consumption mode. During this mode, all buttons and functions will be disabled until they are re-enabled.

ENABLE:

→ → 10 → → 1 →

Once the door is locked then vacation mode will be engaged and all buttons and functions will be disabled

DISABLE:

To disable the Vacation Mode, you must press and hold for more than 3 seconds, then input followed by to unlock the door. Vacation Mode is now disabled.

NOTE: If you only press the for more than 3 seconds but do not input , the system will remain in Vacation Mode.

Secure Lock-Out Period

Warning sounds and LED flashes red after 4 incorrect code attempts: Keypad shuts down for 60 seconds.

9 Additional Programming Functions

Sound On And Off

You can "mute" or turn the "sound on" on your lock by entering the following. (Factory setting is sound on).

→ → 6 → → 1 or 2 →

1 - Sound Off

2 - Sound On

Sound Off (1) - Hear 1 beep and Light Indicator illuminates green.
 Sound On (2) - Hear 1 beep and Light Indicator illuminates green.

Restore Factory Settings

To reset the lock to the original factory settings including the Programming Code and all User Codes follow these steps:

1. Remove one battery for 10 seconds.
2. Reinsert the battery and wait for a long and short beep
3. Press 3 times within 3 seconds.
4. The lock will beep and the light indicator will turn green.

Low Battery Warning

Beeps and LED flashes red 7 times. Replace with good quality alkaline batteries.

Note: Removing batteries does not erase active Administrator or User Codes.

Contact Us First! Do Not Return to Store

EMAIL: locks@lewishymaninc.com
 WEBSITE: www.truboltlocks.info
 ADDRESS: Consumer Assistance Dept.
 Lewis Hyman, Inc.
 860 East Sandhill Avenue
 Carson, CA 90746 USA
 TELEPHONE: US/Canada 800-860-1677 Ext. 1801 (Toll Free)

Troubleshooting

Issue	Solution
Keypad will not function.	<ul style="list-style-type: none"> • Check that all batteries are fresh high quality Alkaline Batteries • Check for proper polarity (+ -) of all batteries • Check that the Control Wire is attached to the Interior Assembly
The Latch is sticking.	<ul style="list-style-type: none"> • Installation screws of the lock may be too tight and have to be loosened • Remove Interior Assembly • Slightly loosen the Mounting Plate screws • Lock and unlock using the Key • Reattach Control Wire and Interior Assembly
No space to store more users.	<ul style="list-style-type: none"> • Delete old user codes or fingerprints
Fingerprint is invalid.	<ul style="list-style-type: none"> • Make sure your fingers and the fingerprint reader are both clean • Keep your finger on the reader until you hear the doorbell • Try using another recorded fingerprint • For consistent failures, delete and reprogram the fingerprint
Latch is not locking in inclement weather.	<ul style="list-style-type: none"> • Push or pull door to direct latch • Re-adjust latch for smoother operations
Admin Code Does not work.	<ul style="list-style-type: none"> • Press numbers slowly and carefully
Fingerprint Does not work.	<ul style="list-style-type: none"> • Hold fingerprint on reader pad longer
Locked out due to wrong code entry	<ul style="list-style-type: none"> • Wait 60 seconds and then try again
Lock is frozen and will not operate	<ul style="list-style-type: none"> • Remove one battery for 30 second to refresh lock
Batteries are dead	<ul style="list-style-type: none"> • Open the lock with Override Access Key and replace batteries
Forgot Admin Code	<ul style="list-style-type: none"> • Reset to factory settings
When temperature is cold	<ul style="list-style-type: none"> • Blow on fingers to warm